

WIRED

Quick Start Guide



WE'RE CONFIDENT WE CAN MAKE IT RIGHT!

If you have any questions or problems with your GPS tracker, please give us a call before you make a return.

Linxup Customer Support Phone: 1-877-732-4980
Email: support@linxup.com

How are we doing? We'd love to know.

We hope you will be pleased with your order and the service you receive. We love to hear from customers about features they love, and ways we can continue to improve your experience. Leave us a review where you made your purchase. Thank you!

For more valuable information, please like us on Facebook, and follow us on Twitter and LinkedIn. You can also check out our blog at www.linxup.com/blog



Activate Your Device

1 Open a web browser and go to: www.linxup.com/getstarted

2 Create an account, or log in to your existing account.

New Customers
Fill out the following to complete your registration:

Activation Code:

E-mail Address:

Create Your Password:

Confirm Password:

I agree to the [Terms & Conditions](#)

Next

Already a Customer?
Simply log in and we'll walk you through the process of adding your new units.

Email Address:

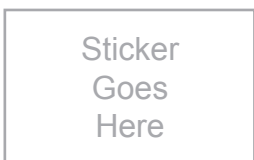
Password:

Sign In

[Forgot Your Password?](#)

If not already on file, you may be prompted for your billing information.

Here's a copy of your device activation code:



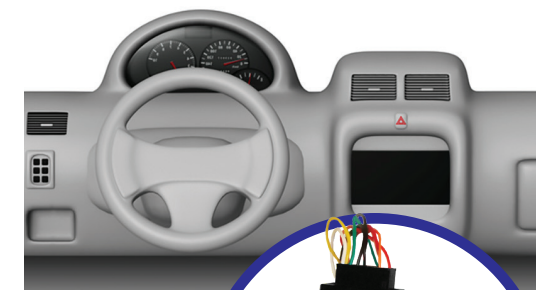
3 Follow the instructions for activating your device(s).

Make sure the activation code on your device matches the code on screen. Or, if your activation code does not show up re-enter it and press continue.



Installing Your Wired Device

4 Wiring the device into a vehicle is easy, and requires installation inside the passenger compartment of the vehicle. The Linxup wired device has a series of wires — you will only need to attach three of these wires to your vehicle (the additional wires are for future features or functions). The three wires you need are: the red wire (power), the longer of the two black wires (ground) and the white wire (ignition sense).



- a. Find the constant red power wire in your vehicle. Cut and strip this wire.
- b. Cut and strip the red wire on the Linxup GPS device.
- c. Connect the two red wires and crimp. This connection provides power to the device.
- d. Connect the Linxup black wire to your vehicle's chassis. This connection serves as a ground for the device.
- e. Locate the vehicle's ignition wire (reference the vehicle's wiring diagram in order to locate).
- f. Verify the ignition wire by measuring the operating voltage while the key is turned to the ON or START position (the voltage should read 0VDC when the key is in the off position, and typically between 11V and 14V when in the ON position).
- g. Connect the white wire on the Linxup device to the vehicle's ignition wire. This connection allows the device to report ignition OFF and ON events.
- h. An optional plastic zip tie is included to secure the device under the vehicle dash with the label that reads "Label Side Down" facing down.

Visit www.linxup.com/wiredinstall to watch a video on the installation process.

5 Confirm the power connection.

Following installation, allow 5-10 minutes for the Linxup device to power up and obtain a cellular and GPS fix. Your vehicle must be outside and not in a covered area so that it will receive GPS signal. When working properly, the blue light will blink once every 3 seconds and you will see a blinking green light.

You should see your car's location on the map (may take up to two hours).



Cell (Blue)	Blinking 1x/second	Searching for a GSM network
	Blinking 1x/3seconds	GSM lock (connected to network)
	Off	Modem reboot
GPS (Green)	Solid	Searching for satellite
	Blinking	GPS lock (connected to satellite)

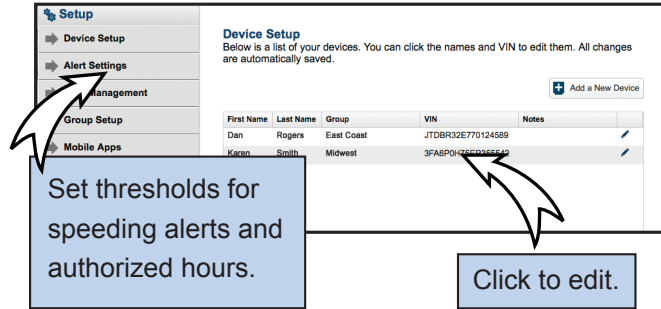
Please note: Should your vehicle require a jump start, you will have to replace the fuse in the wiring harness with a 3 volt fuse.

Get to Know the Linxup System



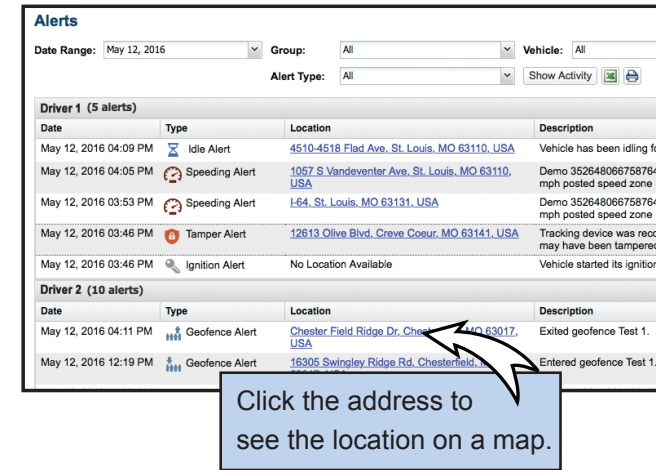
Setup

Customize the Linxup system to make it work best for you.



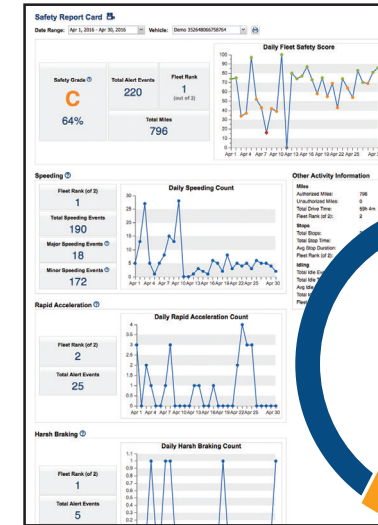

Alerts

Use the Alerts section to review all alerts that occur within defineable dates.




Report

Review all fleet reports from the fleet activity dashboard.




Maintenance

Make vehicle maintenance easier with scheduled maintenance reminders.



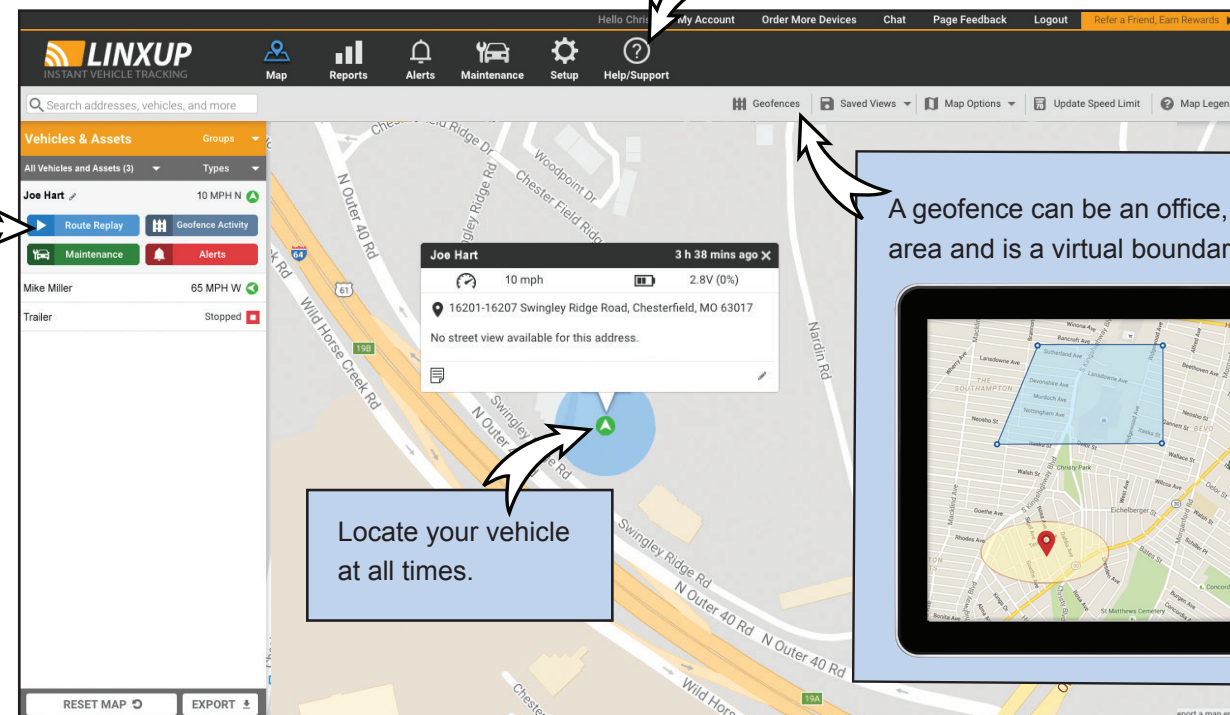
Vehicle	Service Type	Service Interval	Next Service Due
Vehicle 2	General Service	Every 15,000 miles	9,902 miles overdue
Vehicle 4	Preventive Maintenance	Every 5,000 miles	543 miles overdue
Vehicle 1	Oil Change	Every 120 days	6 days overdue
Vehicle 2	General Service	Every 10 days	4 days to go
Vehicle 3	General Service	Every 30 days	30 days to go
Vehicle 1	Tire Rotation		to go
Vehicle 4	Scheduled Service		
Vehicle 2	Scheduled Service		
Vehicle 1	Preventive Maint		
Vehicle 2	Preventive Maint		



Map

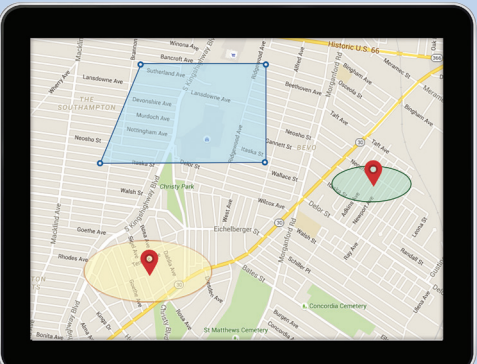
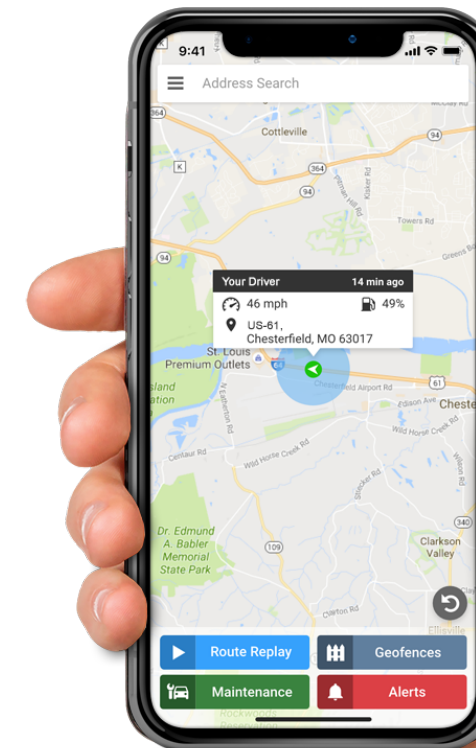
Locate your vehicle at all times, view its history, and manage your geofences.

Use Route Replay to coach your driver by reviewing their driving history.



Locate your vehicle at all times.

A geofence can be an office, job-site, or a restricted area and is a virtual boundary on the map.

Download now! Linxup Mobile App

Track and monitor fleet driving with:
Alerts
Real-time GPS tracking
Driving report card

