

# Connected Vehicle Camera: Video

Welcome to your new Connected Vehicle Camera (aka dash cam)! We are so excited you choose Linxup for your video needs and look forward to giving you an opportunity to get an in depth look at the activities happening within the cab of your vehicles and out on the road.

## This guide includes the following information:

### How to pull video 3 ways

- Camera Generated Video
- GPS Alert Generated Video
- Day View/Manual Video

### Additional Features

- Live Video
- Snapshot
- Guard Mode
- Camera Notifications

## How to Pull Videos

Our dash cam solution offers **three different ways** to pull videos:

### 1 Camera generated videos

Three types of video footage will automatically record and upload straight to your Customer Portal:

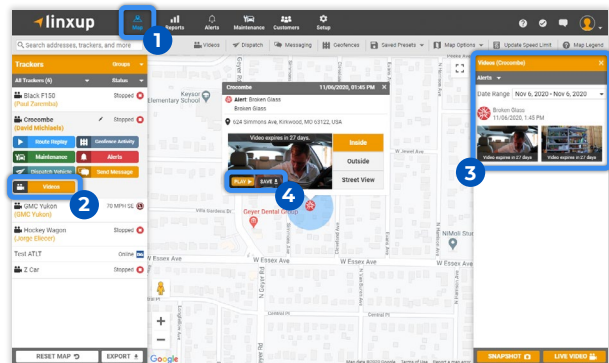
- Broken Glass
- Collision
- Voice activated custom videos
  - These are generated by saying **“OK Presto”**. Once “OK Presto” is said the camera will pull footage from 10 seconds before the command and 10 seconds after to create a custom video clip

All camera generated videos will be stored in your video library for 60 days and will be available during that time to download to your device.

#### To access these videos:

1. Navigate to the main Map page and select the appropriate tracker
2. Select Videos button
3. Find video clip in the right-hand rail using Date Range or Alert criteria

4. A popup box on the map will display the Inside thumbnail, Outside thumbnail, or Street View. Select whether you would like to Play or Save the Inside or Outside view
  - Play = Stream the clip from the cloud
  - Save = Download to your computer



## 2 GPS Alert generated videos

Our solution ties video clips to every GPS alert thrown within your Customer Portal. **You may access GPS related video for up to the past 45 hours of drive time.** *If you need to save the video for later viewing you must click "Add" to save the clip to your Video Library.*

### To access these videos:

1. Navigate to the main Map page and select the appropriate tracker
2. Select Alerts button to view all available alerts and filter by Date Range
3. Click "Check for On Camera Video"
4. The camera will now load all stored video attached to the GPS alerts occurring within the last 45 hours of drive time
5. A popup box on the map will display the Inside thumbnail, Outside thumbnail, or Street View of clip.
  - Select whether you would like to Stream or Add
    - Stream = Stream the clip from the camera
    - Add = Save clip to your video library, which can be accessed later by clicking the Videos button. Videos saved in your video library are available for 60 days.
      - **Reminder:** You must Add the clip to your Video Library to save for later viewing

Once a clip is saved to your Video Library it can be downloaded to your device by clicking "Save" within the selected video popup.

The screenshot displays the Linxup web interface. On the left, a sidebar lists trackers including 'Black F150 (Paul Zaremba)', 'Crocombe (David Michiaels)', 'GMC Yukon (GMC Yukon)', 'Hockey Wagon (Jorge Eliecer)', 'Test ATLT', and 'Z Car'. The main area shows a map with a popup for a speed alert from 'Crocombe' on 12/07/2020 at 01:29 PM. The popup includes a video thumbnail and options for 'Inside', 'Outside', and 'Street View' views, along with 'STREAM' and 'ADD' buttons. On the right, an 'Alerts (Crocombe)' panel shows a list of alerts with a date range filter set to 'Dec 6, 2020 - Dec 12, 2020'. A 'CHECK FOR ON-CAMERA VIDEO' button is visible at the bottom of the alerts panel.

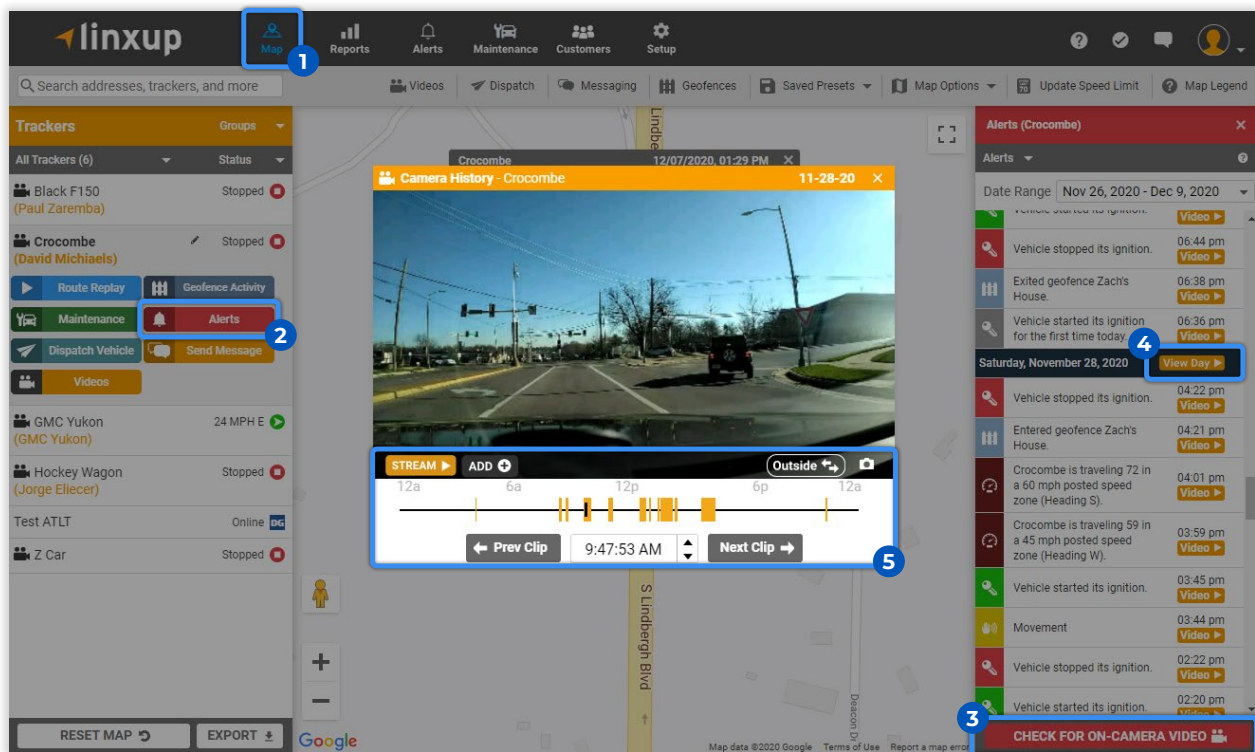
### 3 Manual video review

The final way to pull video is through “View Day”, which is a manual look at the past 45 hours of drive time.

#### To access these videos:

1. Navigate to your main Map page and select the appropriate tracker
2. Select Alerts button to view all available alerts
3. Click “Check for On Camera Video”
4. The camera will now load all stored video attached to the GPS alerts including **View Day**
5. Click View Day. A popup box will display the first footage of the day and you can toggle between Inside and Outside view.
  - Use “Prev Clip” and “Next Clip” as well as selecting parts of the Orange segments to view sections of the drive time for the selected day
  - Stream = Stream the clip from the camera
  - Add = Save clip to your video library, which can be accessed later by clicking the Videos button. Videos saved in your video library are available for 60 days.
  - Camera icon = Downloads a snapshot of the clip to your device

Once a clip is saved to your Video Library it can be downloaded to your device by clicking “Save” within the selected video popup.



## Additional Features

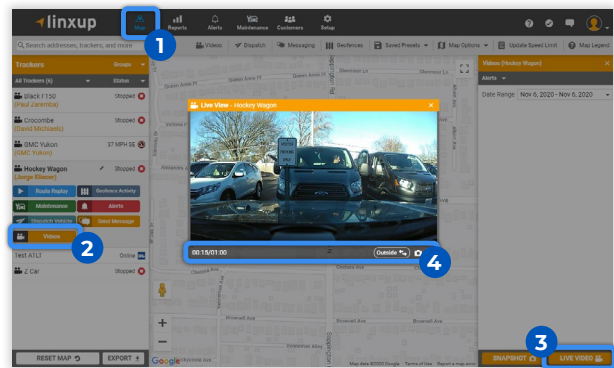
### 1 Live Video

Live Video gives you the ability to stream a minute of real time video straight from the camera. This is live footage and is NOT stored on the camera or in the cloud. Due to this, in-cab audio can be heard during the stream.

#### To access Live Video:

1. Navigate to your main Map page and select the appropriate tracker
2. Select Videos button
3. Select Live Video
4. A popup will display the live video and you will see a timer for 1 minute. You can toggle between Inside and Outside view
  - Camera Icon = Download a snapshot of the Live Video to your computer

**Note:** Live view is cellular network dependant and requires a strong cellular signal where the camera is located

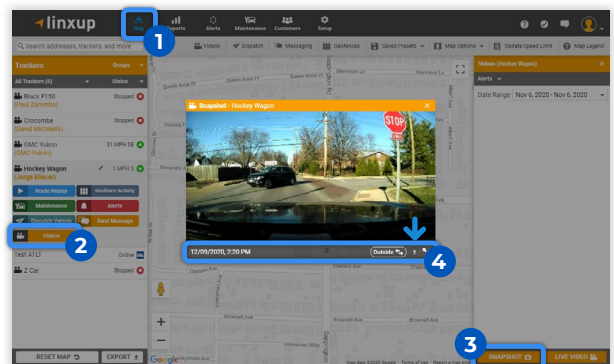


### 2 Snapshot

Snapshot allows you to pull a quick image of the last time the camera connected to the servers.

#### To access Snapshot:

1. Navigate to your main Map page and select the appropriate tracker
2. Select Videos button
3. Select Snapshot
4. A popup will display the last available image. You can toggle between Inside and Outside view
  - File Download Arrow = Download the Snapshot to your computer



### 3 Guard Mode

Guard Mode is included as a feature on your camera and allows for 24/7 protection of your vehicle.

The camera captures and records events 24/7, even when the engines are off. After 5 minutes of the ignition being off the camera enters Guard Mode. If movement or broken glass is detected LED lights will light up the vehicle interior and the camera will begin recording.

If Broken glass is detected, a video will automatically be uploaded to your Videos Library. If Movement is detected, a video is able to be pulled through Alerts Videos.

## 4 Camera Notifications

In addition to a multitude of GPS generated notifications our solution offers the ability to set notifications for Camera-specific alerts as well.

### To set Camera Notifications:

1. Navigate to Setup
2. Click General Notifications in the left-hand menu
3. Click Add Notification
4. Fill out all Notification details and options:
  1. Name Notification
  2. Trackers, Drivers, or Groups to Monitor
  3. Alert Types: Select the Camera Preset to engage all camera related alerts for your vehicle or select from the Available Alerts list
  4. Alert Delivery
5. Click Save

